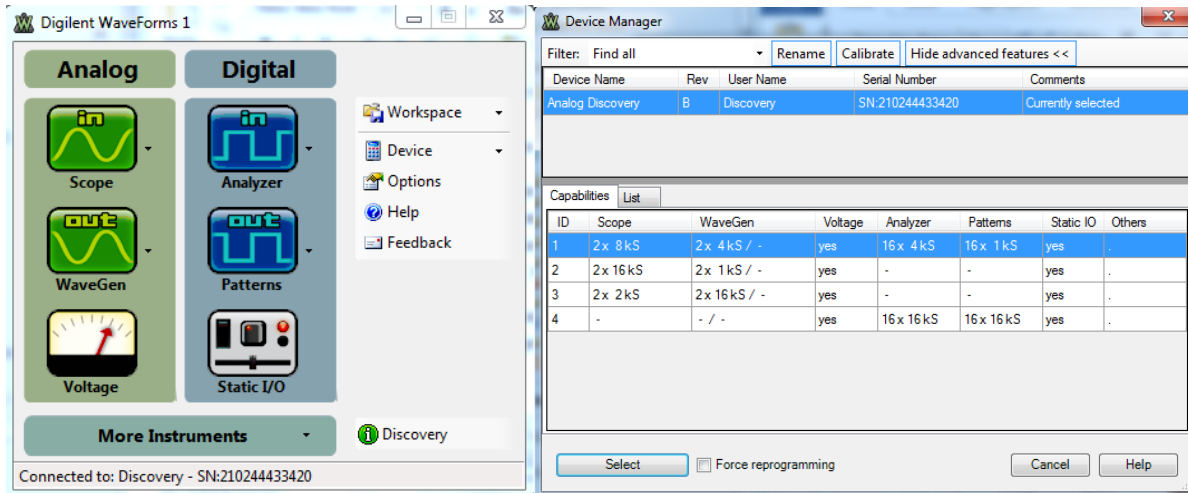
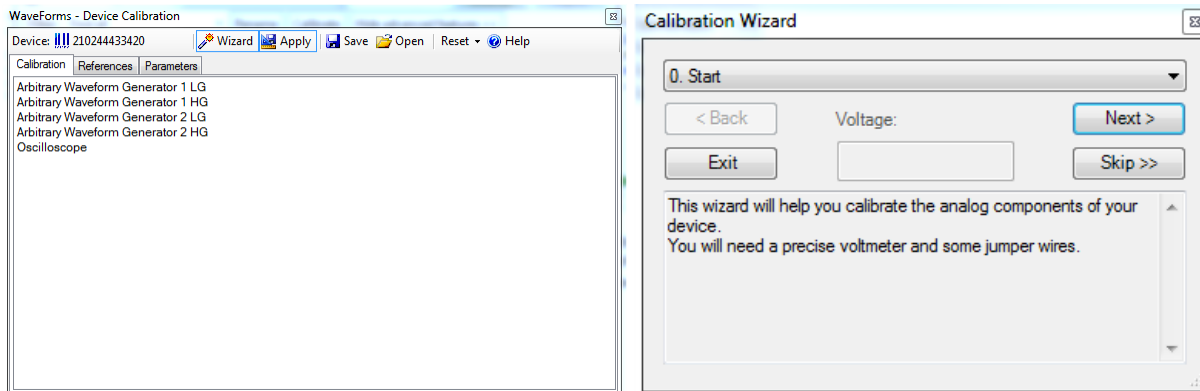


Calibration

To calibrate the Analog Discovery, it is necessary to use a more accurate (and usually much more expensive) device. A 6-digit multi-meter is the best choice, but, basically, any DVM can be used, including the cheap \$3 ones, if that is all you have. Keep in mind, though, that the better the meter, the better the calibration.



1. Connect your Analog Discovery to your computer.
2. Open Digilent Waveforms
3. From the *Device* menu, select *Manager*
4. Select *Calibrate* – Note that each AWG is to be calibrated twice, once at low gain (LG) and once at high gain (HG). After the AWGs are calibrated will you calibrate the scope.



5. Select *Wizard* and follow the directions. In this procedure, you will first calibrate the Arbitrary Waveform Generators (W1 & W2) using the best Digital Voltmeter you have. Note that it is easier to do the calibration if you have a protoboard for connecting things. Be sure to fully complete the calibration procedure. You will be asked to apply the calibration. It is also a good idea to save the calibration file, especially if you swap Analog Discovery boards with another team when doing projects.