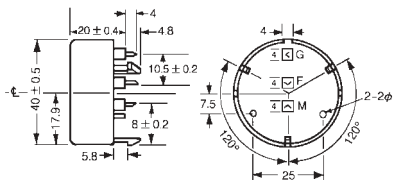


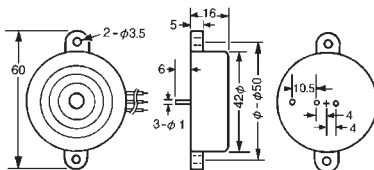
## Piezo Buzzers - Self-Drive

Part Number	Resonant Frequency (Hz)	Electrostatic Capacity (pf)	Max Input Voltage	Terminal Type	Operating Temperature	Sound Pressure Level
BRP4016P-30	3200 ± 500Hz	30,000 ± 30%	30Vp-p	3 Pins	-20° to +60°C	95dB @30cm9Vp-p
BRP4216L-30	3000 ± 500Hz	25,000 ± 30%	30Vp-p	3 Leadwires	-20° to +60°C	85dB @1M15Vp-p
BRP4216P-30	3000 ± 500Hz	25,000 ± 30%	30Vp-p	3 Pins	-20° to +60°C	85dB @1M15Vp-p

### BRP4016P Series



### BRP4216 Series



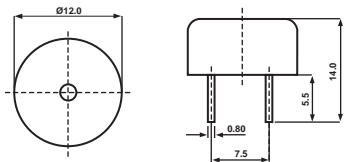
# Piezo Electric Alarms

## Piezo Electric Alarms with Internal Circuitry

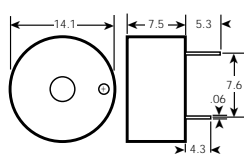
Part Number	Rated Voltage (VDC)	Operating Voltage (VDC)	Max. Current (mA)	Min. Sound Output Level	Terminal Type	Tone Mode Pulse/Second	Frequency	Operating Temperature
BRP1209P-12-C	12	2.5 - 15	8	75dB @ 30cm	2 Pins	Continuous	5000 ± 500Hz	-20° to +70°C
BRP1408P-12-CS*	12	3 - 16	7	80dB @ 30cm	2 Pins	Continuous	4000 ± 500Hz	-40° to +120°C
BRP1514P-05-C	5	1 - 12	15	83dB @ 10cm	2 Pins	Continuous	4000 ± 500Hz	-20° to +60°C
BRP1514P-12-C	12	1 - 18	20	85dB @ 10cm	2 Pins	Continuous	4000 ± 500Hz	-20° to +60°C
BRP2211P-12-C	12	3 - 15	4.5	75dB @ 30cm	2 Pins	Continuous	4000 ± 500Hz	-20° to +70°C
BRP2211P-12-CS	12	3 - 15	4.5	75dB @ 100cm	2 Pins	Continuous	4000 ± 500Hz	-30° to +110°C
BRP2212L-12-C	12	3 - 15	4.5	90dB @ 30cm	2 Leadwires	Continuous	4000 ± 500Hz	-10° to +60°C
BRP2212P-12-C	12	3 - 15	4.5	90dB @ 30cm	2 Pins	Continuous	4000 ± 500Hz	-10° to +60°C
BRP2307L-12-C	12	3 - 24	5	75dB @ 30cm	2 Leadwires	Continuous	4000 ± 500Hz	-20° to +70°C

\*Indicates Wave Solderable and Washable

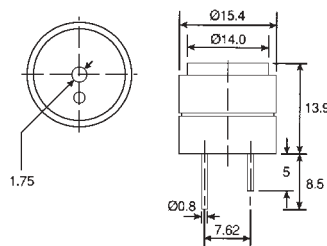
### BRP1209P-12-C Series



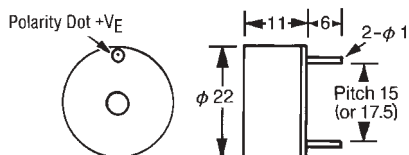
### BRP1408P-12-CS Series



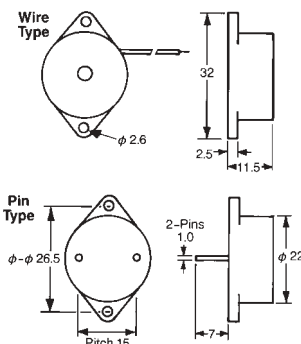
### BRP1514P-C Series



### BRP2211P-12-C/CS Series



### BRP2212L-12-C Series



### BRP2307L-12-C Series

